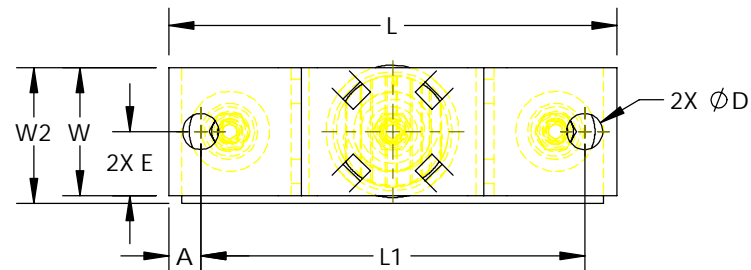
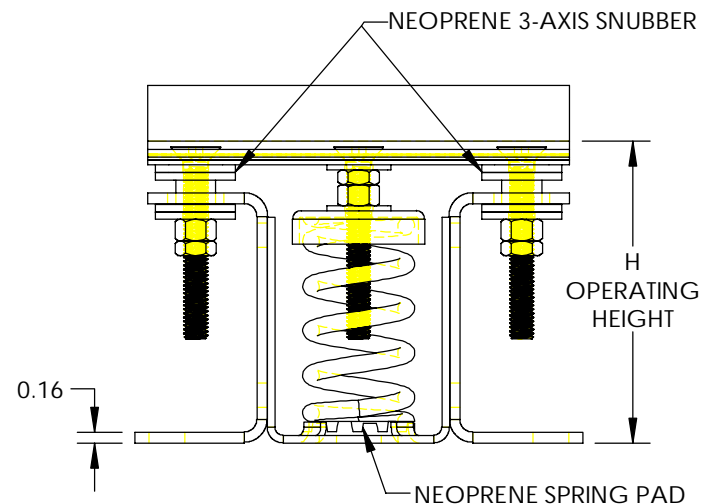
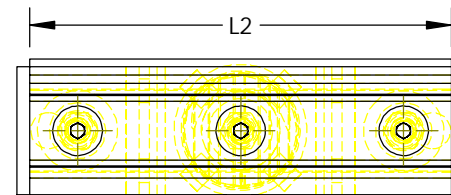
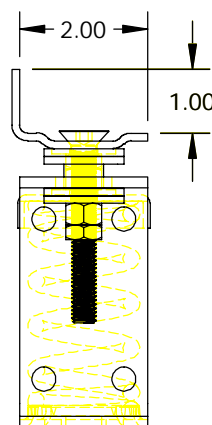
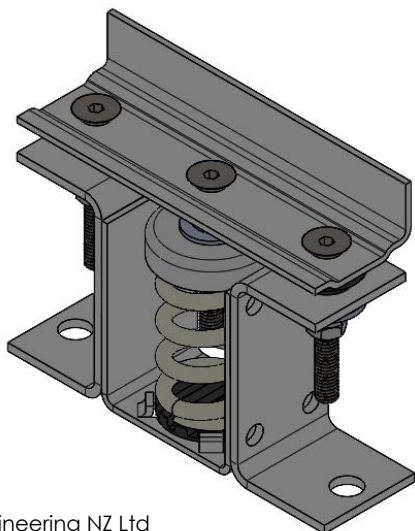


USE WITH SHEETS 2 AND 3.



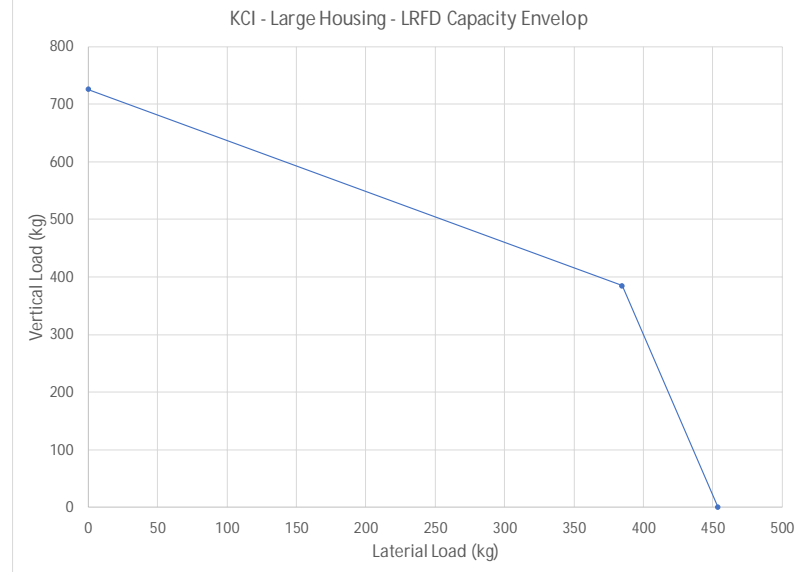
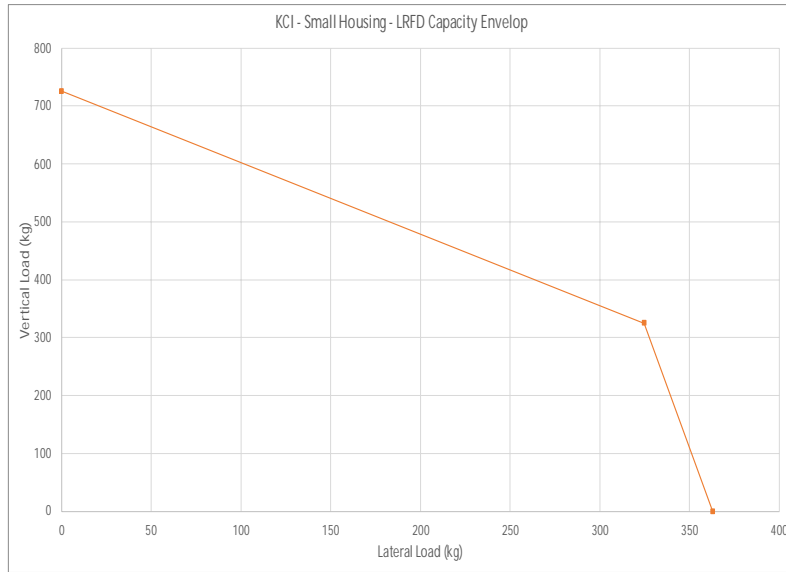
Storm Engineering NZ Ltd  
46 Edward Street, Rangiora 7400  
NZ NZB 94-29049517590  
PH: +64 21 310226  
EMAIL: richard@stormengineeringnz.com  
WEB: www.stormengineeringnz.com

**SPECIFICATIONS:**

- VERTICALLY AND LATERALLY RESTRAINED SPRING ISOLATOR WITH CONSTANT FREE AND OPERATING HEIGHT AND REPLACEABLE NEOPRENE SNUBBING ELEMENTS.
- 0.125 INCHES NOMINAL CLEARANCE AT SNUBBING ELEMENTS.
- MINIMUM OVERLOAD OF 50%
- MINIMUM Kx/Ky RATIO OF 1.0.
- ALL ELEMENTS SAFE AT SOLID LOADING.
- POWDER COATED SPRING COILS. HOT DIP GALVANIZED HOUSING AND MOUNT BRACKET.

	TITLE	REVISION DATE	REVISED BY	DRAWING NO.
	KCI-A-1 SPRING ISOLATOR	09/21/22	BB	S-01.37-110
				WEIGHT: 3.44 Lbs
				SHEET 1 OF 3

SI UNITS (MILIMETERS AND KILOGRAMS), USE WITH SHEET 1.



MODEL	SPRING					DIMENSIONS										RESTRAINT CAPACITY	
	COLOR	FREE HT.	O.D.	RATED		A	D	E	H	L	L1	L2	W	W2	VERTICAL	HORIZONTAL	
				LOAD	DEFLECTION												
KCI-A-1-12	SILVER	81	44	5	25	13	14	25	114	178	152	167	51	54	726	363	
KCI-A-1-18	YELLOW	81	44	8	25	13	14	25	114	178	152	167	51	54	726	363	
KCI-A-1-24	BLUE	81	44	16	39	13	14	25	114	178	152	167	51	54	726	363	
KCI-A-1-30	PINK	81	44	14	25	13	14	25	114	178	152	167	51	54	726	363	
KCI-A-1-37	WHITE	81	44	17	25	13	14	25	114	178	152	167	51	54	726	363	
KCI-A-1S-50*	GREEN	81	44	32	35	13	14	25	114	178	152	167	51	54	726	363	
KCI-A-1-75	BLACK	81	44	34	25	13	14	25	114	178	152	167	51	54	726	363	
KCI-A-1S-100*	GRAY	81	44	54	30	13	14	25	114	178	152	167	51	54	726	363	
KCI-A-1-150	RED	81	44	68	25	13	14	25	114	178	152	167	51	54	726	363	
KCI-A-1-210	BROWN	81	44	100	27	13	14	25	114	178	152	167	51	54	726	363	
KCI-A-1-300	PURPLE	81	44	136	25	13	14	25	114	178	152	167	51	54	726	363	
KCI-A-1-385	ORANGE	81	44	168	24	13	14	25	114	178	152	167	51	54	726	363	
KCI-A-1-500	BEIGE	81	44	227	25	13	14	25	114	178	152	167	51	54	726	363	
KCI-A-1L-50*	BEIGE	107	76	23	25	19	18	44	140	267	229	217	89	92	726	454	
KCI-A-1L-100*	CHROME	107	76	45	25	19	18	44	140	267	229	217	89	92	726	454	
KCI-A-1L-250	BLUE	107	76	113	45	19	18	44	140	267	229	217	89	92	726	454	
KCI-A-1L-450	GREEN	107	76	204	39	19	18	44	140	267	229	217	89	92	726	454	
KCI-A-1L-625	BLACK	107	76	283	37	19	18	44	140	267	229	217	89	92	726	454	

Storm Engineering NZ Ltd  
 46 Edward Street, Rangiora 7400  
 NZ NZB 94-29049517590  
 PH: +64 21 310226  
 EMAIL: richard@stormengineeringnz.com  
 WEB: www.stormengineeringnz.com

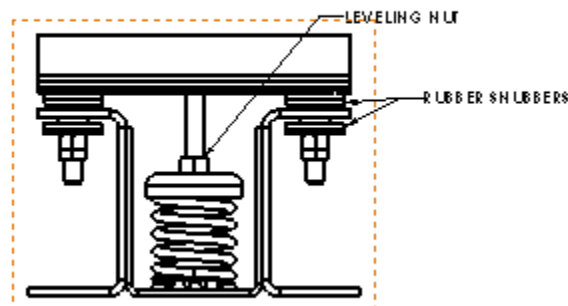
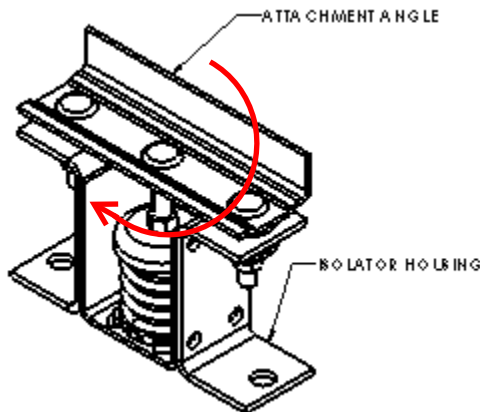


\*KCI Models with an "S" or "L" indicate there is both a small and large housing with the same loading capacity. Please note that these are different isolators although identical capacities.

	TITLE	REVISION DATE	REVISED BY	DRAWING NO.
	KCI-A-1 SPRING ISOLATOR	09/21/22	BB	S-01.37-110 METRIC
				WEIGHT: Lbs
				SHEET 3 OF 3

## KCI-A Installation Instructions

1. Locate each KCI-A Isolator as specified on the Submittal Drawing.
2. Align the equipment.
3. Mark the Isolator Housing attachment locations.
4. Raise the equipment and install the Isolator Housing attachment anchors or fasteners.
5. Lower the equipment and fasten to Attachment Angle.
6. Adjust the KCI-A Isolator by turning the Leveling Nut 1 to 2 turns clockwise.
7. Repeat turning the Leveling Nut 1 to 2 turns clockwise on each isolator until the gap between the Isolator Housing and Rubber Snubber faces is equal on the top and bottom.
8. Do not move the KCI-A Isolators laterally with the weight of the equipment on them. Raise the equipment to remove the weight from the KCI-A Isolators before moving



**Adjust anti-clockwise  
to compress spring**

Storm Engineering NZ Ltd  
46 Edward Street, Rangiora 7400  
NZ NZB 94-29049517590  
PH: +64 21 310226  
EMAIL: richard@stormengineeringnz.com  
WEB: www.stormengineeringnz.com